



**CENTENNIAL
BOLT, INC.**

CATALOG

YOUR CUSTOMIZED FASTENER SOLUTION

Centennial Bolt, Inc. has operated with integrity for over the past 45 years. This, coupled with a highly motivated and customer service oriented team, makes us what we are; a great company for you to work with.

Please utilize this catalog for your reference and convenience. If we are missing any areas where we might provide support, please do not hesitate to contact us.

Mark Cordova
President

INDEX

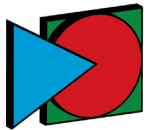
STRUCTURAL BOLTS	3
STRUCTURAL NUTS	4
STRUCTURAL WASHERS	4
TOWER BOLTS	5
DOUBLE ARMING	5
MACHINE BOLTS	6
ALL THREAD ROD	6
STUDS	7
ANCHOR BOLTS	7
U-BOLTS	8
LOCKWASHERS	8
SHACKLES	9
CLEVIS PINS	9
TURNBUCKLES	10
Inventory catalog is still in Progress	



CERTIFICATIONS:



OUR DIVISIONS:



**CENTENNIAL
INFRASTRUCTURE
PRODUCTS**



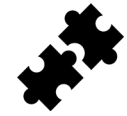
SERVICES:



Dedicated Inventory Programs
Custom Designed Parts
Sub Assembly
Custom Part Number Cross Referencing
Vendor Managed Inventory Systems (VMI)
Customer Consigned Inventory Programs
KANBAN Programs



Same Day Shipping
Local Delivery
Shrink Wrapping
Scheduled Deliveries
Special/ Custom Packaging
Export Packing and Shipping



Kitting Services
Customized Bar Coding
Customized Billing and Reports
Private Label Packaging
Engineering Design Support
Electronic Data Interchange (EDI)



Customer Service
Engineering Specifications
145 years of Combined Fastener Knowledge

STRUCTURAL BOLTS



- Heavy Hex A325 & A490 (F3125) Structural
- A307 Grade A & B Hex
- All Material Types

Heavy hex structural bolts are typically used as connectors to three primary joint types: Slip critical, Pre-tensioned, and Snug-tightened joints. Therefore, these bolts are typically very short. The A325 and A490 specifications are not intended for general applications, including anchor bolts.

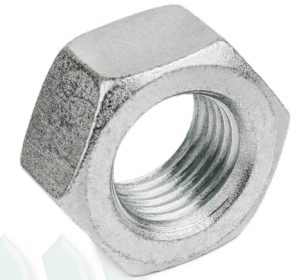
GRADE	Nominal Size (in)	Yield Strength (ksi)	Proof Strength (ksi)	Tensile Strength (min)
Type 1	1/2-1 (inc.)	92	85	120 ksi
	1-1.5	81	74	105 ksi
Type 2	1/2-1	92	85	120 ksi
Type 3	1/2-1	92	85	120 ksi
	1-1.5	81	74	105 ksi

Please call for metric bolt information.



- A325 & A490 (F1852 & F2240) Tension Control (TC)*
- A325 & A490 (F1852 & F2240) TC Assembly-Domestic
- TC Gun Sales & Rental S60/S90/S110

STRUCTURAL NUTS



- A194 2H Domestic
- A194 2H Import
- A325 Domestic
- A325 Import
- A563 Gr. DH Heavy*
- A325 Type 3
- Anco Heavy Hex Locknut
- Anco Finished Locknut
- Anco 2H Heavy Locknut
- Anco A325 Locknut
- Allen Nut
- Castle
- Coupling
- Reducer Coupling
- Acorn/Cap
- Finished Hex
- L9 Finished Hex Nut
- Heavy Hex
- Finished Jam
- Heavy Jam
- Left Hand
- Heavy Left Hand
- Guardrail (Heavy Double Recess)
- Grade 4--- Heavy
- Grade 7--- Heavy
- Can furnish other types of non-ferrous and exotic materials

STRUCT. WASHERS



- USS Flat/Cut
- A325/A490 (F436) Hardened*
- A325 Type 3
- A325 Square Beveled Clipped*
- A325 & A490 Direct Tension Indicator
- Square Plate
- Square Malleable Beveled
- Round Malleable Iron
- Beveled Washer Aluminum
- Belleville
- Hillside Washers
- Ogee Pattern
- Torque Washer
- USS Hard F436 Flatwasher
- SAE
- Fender
- L9
- Bonded Sealer Finishing
- Flat Washer--- Miscellaneous

TOWER BOLTS



TYPE	STEEL	COATING	HARDNESS & TENSILE STRENGTH	RECOMMENDED NUT & WASHER
T-0	Low or Medium Carbon	Hot-Dip Galvanized	80-100 HRB 74 KSI min	A hex nut; F436 washer
T-1	Medium Carbon, quenched and tempered	Hot Dip Galvanized	25-34 HRC; 120 KSI min tensile	DH hex nut; F436 washer
T-3	Weathering steel, quench and tempered	Plain	Same as T-1	DH3 plain; F436 Type 3 Washer

DOUBLE ARMING



- Square Nuts
- Zinc, Plain, or Hot Dipped Galvanized
- Fine Threaded or Coarse

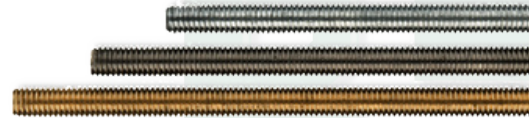
MACHINE BOLTS

- Square Nuts
- Zinc, Plain, or Hot Dipped Galvanized
- Fine Threaded or Coarse



A machine bolt is used to connect wood to metal, and it can also be used to connect metal to wood. It has four different ways of marking its point: chamfered or rounded, larger sizes, non-underhead washer bearing surface, and it will not have an internal thread.

ALL THREAD ROD



Diameters	2-56 to 2"
Lengths	6' to 12'
Tube Qty's	1 to 25
Materials	Low Carbon Steel, T304 Stainless, T316 Stainless, ASTM A 193 B7, F1554 Grade 55, Grade 8, Brass, Aluminum, Silicon Bronze
Finishes	Plain, Clear/ Yellow Zinc Plated, Hot-Dip Galvanized, Black Oxide, Nickel Plated
Threads	Coarse (right & left hand), Fine (right & left hand), Metric, Imperial

A threaded rod is a type of fastener that is commonly used to extend the length of a rod. It is also known as a headless fastener. A fully-threaded rod or threadless rod is typically used with standard nuts and washers. These are used extensively in plumbing, electrical, automotive, heavy construction, HVAC, fire sprinklers and telecom.

STUDS



A threaded stud is a solid metal unit that is used for construction, manufacturing, and mechanical engineering. It can be made from various materials such as steel, aluminum, and copper.

Diameters	2-56 to 2"
Lengths	1/2" to 12"
Threads	Coarse (right & left hand), Fine (right & left hand), Metric, Imperial
Materials	Low Carbon Steel, T304 Stainless, T316 Stainless, ASTM A 193 B7, F1554 Grade 55, Grade 8, Brass, Aluminum, Silicon Bronze
Finishes	Plain, Clear/ Yellow Zinc Plated, Hot-Dip Galvanized, Black Oxide, Nickel Plated
Types	Fully-Threaded/All Thread, Single-End, Double-End

ANCHOR BOLTS



Anchor bolts are used to connect non-structural components to concrete. They can be made using various components such as steel plates, anchor bolts, and stiffeners.

U-BOLTS

A U-Bolt is a type of bolt with a curved base and two threaded arms. These components are mainly used for building and construction.

Pipe Size	2-56 to 2"
Rod Dia.	1/2" to 12"
Threads	Coarse (right & left hand), Fine (right & left hand), Metric, Imperial
Materials	Low Carbon Steel, T304 Stainless, T316 Stainless, ASTM A 193 B7, F1554 Grade 55, Grade 8, Brass, Aluminum, Silicon Bronze
Finishes	Plain, Clear/ Yellow Zinc Plated, Hot-Dip Galvanized, Black Oxide, Nickel Plated



LOCKWASHERS

Washers which prevent unfastening by inhibiting an unscrewing rotation of the fastening device; also called spring washers.



SHACKLES



A shackle is a piece of metal that is secured with a bolt or a clevis pin, and it generally has a hinged metal loop or a quick-release locking mechanism. It is the primary link in all types of rigging systems, such as boats or cranes.

- Anchor Shackles / Bow Shackles
- Chain Shackles / D Shackles
- Screw Pin Shackles
- Bolt Type Shackles
- Round Pin Shackles
- Specialty Shackles

CLEVIS PINS



Clevises are used in a wide variety of fasteners from farming equipment to sailboat rigging, as well as the construction industries. A clevis provides a method of allowing some rotation on certain axes while simultaneously restricting rotation within others.

There are two types of clevis pins: threaded and unthreaded. Unthreaded clevis pins have a domed head at one end and a cross-hole at the other end. A bolt can function as a clevis pin, but a bolt is not intended to take the lateral stress that a clevis pin must handle.

TURNBUCKLES

Turnbuckles are very versatile and can be used in a variety of applications with varying degrees of tension. These are often used for applications where a great deal of tension is required. For instance, turnbuckles are often used for the tension of a cable used in a garden fence, structural elements, and suspension bridges.

- Jaw & Jaw Galvanized
- Jaw & Eye Galvanized
- Eye & Eye Galvanized
- Hook & Eye Galvanized
- Hook & Hook Galvanized
- Stainless Steel



PRODUCT AVAILABILITY This catalog identifies those products which are most often required by our customers. Centennial Bolt, Inc. stocks most of the items listed in this catalog, however, some non-stock items are listed to represent the full line of manufacturer's products. All stock items will be shipped no later than next day, while non-stock or special items will depend on availability. Please ask Centennial Bolt, Inc. about all of your fastener needs, even if they aren't listed in the catalog.

PAYMENT TERMS Our terms are 1% 10, Net 30 based on our invoice date. Interest will be charged at a rate of 18% per annum to all balances past 60 days at the time statements are generated. Discounts taken past their allowed date may be subject to a chargeback. Centennial Bolt, Inc. accepts MasterCard, Visa and American Express charge cards on telephone and will-call counter orders. Credit card payments are accepted up to 30 days after the invoice date. Credit card payments made after the invoice due date will be charged an additional 3% transaction charge.

PRICES AND QUOTATIONS Written quotations are valid until the expiration date indicated; verbal quotations are offered for immediate acceptance. Clerical or other accidental errors are subject to correction.

TAXES Local, County and State taxes will be imposed on all items unless a tax exemption certificate is filed with Centennial Bolt, Inc.

DELIVERY TERMS The terms for most items are F.O.B. Shipping Point. Delivery service provided by Centennial Bolt, Inc. is available within our delivery area. If a common carrier is to be used for delivery, the freight charge is generally prepaid and added. If you require special shipping methods, please advise us at the time of the order, otherwise we will use our best judgment in routing.

WILL-CALL ORDERS Our will-call counters are available both for orders placed at the counter, and for the orders placed over the telephone. Orders can be picked up at any of our will-call counters. We make every effort to ensure that your order is ready when you come to pick it up. We encourage you to place your orders in advance whenever possible, as the will-call counters serve these customers before serving customers with walk-in orders.

CATALOG SPECIFICATION AND DATA The specifications and data in this catalog are provided by the manufacturer and are printed for your convenience. We assume that this data is accurate but we make no guarantees on the information and make no implied or expressed warranties on such information. **RETURNS** Items can be returned only with the prior approval of Centennial Bolt, Inc.

OPENING AN ACCOUNT WITH US We accept all applications for account. Once we receive the application, we will begin processing it immediately and will advise you regarding the status of the applications or any questions.



ABOUT US

In 1979, as Moses and Rachel were starting their own company in Los Angeles, CA, their son Mark, moved to Denver to begin his own business in the fastener industry. For over 40 years, Mark made Centennial Bolt a premier fastener company to work with in the Rocky Mountain Region.

After working as a consultant for many years at Cordova Bolt, in 2008, Mark was asked by both his parents to be the President of Cordova Bolt, Inc. for his experience, leadership, industry knowledge and moral principles.

Mark has served on the board of National Fastener Distributor Association (NFDA), the Executive Board of the National Association of Manufacturers (NAM), and Chairman-Elect of the Colorado Advanced Manufacturing Association (CAMA).



QUALITY ASSURANCE

Quality is our number one priority. At Centennial, we are currently pursuing ISO 9001 certification for distribution and overall quality management systems. We are committed to procedures and manufacturing that comply with ASTM, ISO, and articles under the Consumer Protection Act.

Centennial conforms to proper disclosure of material test reports and country origins on all products it receives and distributes. Should you have any questions, please contact our QA department at quality@centennialbolt.com.



OUR COMMITMENT

We at Centennial Bolt strive to give you the best possible service coupled with the most competitive pricing available. Should you have any questions or if there is something you do not see, please do not hesitate to contact us.



VISIT US AT WWW.CENTENNIALBOLT.COM

CONTACT INFORMATION

CORPORATE ADDRESS
4930 FOX STREET, SUITE A
DENVER, CO 80216-1849

TOLL FREE
(800) 321-9996

LOCAL PHONE
(303) 371-1370

FAX
(303) 371-0805



Your Customized Fastener Supplier